

## Narrandera Bird Sites

### ROCKY WATERHOLES AND NARRANDERA FLORA AND FAUNA RESERVE 1

Consists of red gum on one side of the channel and mixed woodland on the other.

Access to both sites is along the Old Wagga Road. At about 4km along, there is a sign pointing to Rocky Waterholes. Take that road to the new bridge over the channel.

Birds seen around the bridge include: Sacred Kingfisher (summer), Flame and Scarlet Robins (winter), Crested Shrike-tit (rare) and Little Bittern (late spring in the cumbungi). Other birds found are parrots, fairy wrens, ducks and other waterbirds.

Cross over the bridge and walk along the channel bank and adjoining areas in

The Narrandera Flora and Fauna Reserve and look for koalas in the red gums as well as a variety of bush birds including Grey-crowned Babbler and Tawny Frogmouth.

*\* Bush camping is allowed but there are no toilet facilities available.*



Grey-crowned Babbler

### FIVE MILE RESERVE 2

A riparian reserve of mixed woodland dominated by River Red Gum forest, is a further 4km from the Rocky Waterholes turnoff on the Old Wagga Rd. This is a water ski-ing area and is popular at weekends. The lake is good for waterbirds as well as parrots and Brown Treecreeper. A pair of White-bellied Sea-Eagle breed in the area. On the opposite side of the road is an ephemeral wetland. This is a stock reserve and public access is permitted. Climb the fence and walk along the channel bank on either side.

*\* Bush Camping is permitted with basic toilet facilities.*

### THE NARRANDERA WETLANDS 3

Adjoining the Murrumbidgee River on the Newell Highway has the possibility of crakes and more rarely, Little Bittern in the warmer months. This is also an excellent site for parrots, wrens and various waterbirds.

In the summer, Dollarbirds are often present perched high in the dead trees.

*\* Bush camping with limited toilet facilities is permitted at the oval opposite.*



Brolga

### GILLENBAH STATE FOREST 4

A cypress pine forest on the Newell Highway heading south.

### GALORE HILL NATURE RESERVE 5

On the way to Lockhart south of Narrandera. This is an area of natural bush where an arboretum of native shrubs and trees has been planted and is very good for bush birds: Diamond Firetail, honeyeaters, parrots and woodswallows are regularly seen there. Drive to the towers at the top of the hill for a chance of seeing Peregrine Falcon and White-throated Treecreepers.

### LAKE COOLAH 6

A cane grass depression, on the Narrandera/Barellan Rd has been a good birding site after flooding rain. Barellan Rd itself is also good for parrots in the early morning.



Blue Bonnet

### BUNGANBIL STATE FOREST 7

A cypress pine forest, is a good site for bush birds.

## Leeton Bird Sites

### FIVEBOUGH WETLANDS (8) AND KOONADAN/TUCKERBIL (9)

*These two wetlands are listed as Ramsar sites of international importance for the birds they attract, particularly migratory wading birds, Australasian Bittern, Brolga, Glossy Ibis and Whiskered Tern.*



Freckled Duck

### FIVEBOUGH WETLANDS 8

The main access is via Petersham Rd to the main car park entrance. The wetlands have several tracks and there are hides from which birds can be viewed when the water level is high. The hide situated overlooking the settling ponds is excellent to see many duck and waterbird species.

Depending on the time of year, it is possible to see most of the inland duck species. Freckled, Blue-billed, Pink-eared and Musk Ducks are regularly recorded in these ponds particularly during the cooler months.

Hooley Lookout on the northern side just off Fivebough Rd is also worthwhile especially when the water level is high to get a good overall view of the wetlands.

### KOONADAN HISTORIC SITE AND TUCKERBIL WETLANDS 9

Access is via Cantrill Rd just off Leeton Griffith Road. At the Koonadan site, it is possible to get numbers of bush birds and in the quarry adjacent to the area, White-backed Swallow and Red-backed Kingfisher have been recorded breeding in the banks. On the walk up the hill it is possible to get good views of the Tuckerbil Swamp Ramsar site. Between the Koonadan HS and Tuckerbil Swamp itself is a dam, The Basin, which is a leasehold area and access is not always permitted. However, access to Tuckerbil Swamp itself is possible when the property is not running stock on it.

Contact the MFN by email (info@mfng.org.au) to arrange access.

*\* None of these sites have toilets or allow camping.*



Australasian Bittern

### EVANS SMYLES RD 10

Mixed roadside woodlands, just off the Brobenah Hall Rd about 15km north of Leeton. It is good for bush birds including finches (Diamond Firetail and Double-barred ), Mulga Parrots and Cockatiels, robins (Red-capped and Hooded), Variegated Fairy Wren, Southern Whiteface and summer visitors such as Bee-eater and Dollarbird. Glossy Black Cockatoos are active in these hills and in the eastern Cocoparra, mostly on private land, so keep an eye out from the roads and you might see them.



Glossy Black Cockatoo

### GOGELDRIE WEIR 11

Off Whitton Rd, and the adjoining Murrumbidgee Valley National Park along River Rd are good in the summer months for parrot species. Superb Parrots breed along the river in spring.

### TURKEY FLAT 12

On River Rd just out of Yanco and McCaughey Wetlands near Yanco Agricultural High School. These are part of the Murrumbidgee Valley National Park and have a regular environmental water allocation to ensure the wetlands remain intact.

### EUROLY BRIDGE 13

Boat ramp area on Euroly Rd past the Yanco Ag High School. Good in the warm months for Superb Parrot and Dollarbird as well as Yellow and Eastern Rosellas.

### BILLENBAH NATIONAL PARK 14

A cypress box woodland, on Innisfail Rd just past the Euroly Bridge is best visited in the early morning.

## Griffith Bird Sites

### CAMPBELL'S SWAMP (15), LAKE WYANGAN (16) AND NERICON SWAMP (17)

### CAMPBELL'S SWAMP 15

Entrance off Boorga Rd 500m north of Jones Rd. Is a very good site for waterbirds. Freckled, Pink-eared, Blue-billed and Musk Ducks are regularly reported. It is also good for grebe, crake and bittern. Both Australasian and Little Bitterns have been recorded there in the warmer months. A walk around the edge of the swamp is also good for bush birds and migratory wading birds in summer.

### LAKE WYANGAN SOUTH 16

A walk across the causeway is often worthwhile to see waterbirds including the four cormorant species - it is the most reliable local site to see Pied Cormorant. Great Crested Grebe is also regularly seen on both lakes.



Cockatiel

### NERICON SWAMP 17

Entrance off Boorga Rd 1.6km north of Jones Rd. Is good when it has water, although the car park and adjoining planted bushland is good for honeyeaters and other bush birds.

*\* None of these sites have toilet facilities nor allow camping. Toilets are located in the Lake Wyangan Picnic Area on the northern lake and there is a camping area adjacent with limited facilities.*

### GRIFFITH GOLF COURSE 18

Follow signs to the Airport. Is good for parrots particularly in the early morning and late afternoon.

Major Mitchell's Cockatoo use the golf course to roost in the evenings but are not easy to find during the day.

In the Collina and north Scenic Hill areas keep an eye and ear out, morning and evening, for flocks heading back and forth.

There is a pair of Tawny Frogmouth that have been resident in the golf course car park and Grey-crowned Babblers along Remembrance Driveway.



Major Mitchell's Cockatoo

### BARREN BOX SWAMP 19

Is a water storage and wetland. This is a very good site for waterbirds and bush birds. Access is possible by contacting the Murrumbidgee Irrigation Office on 02-6962 0200 to get a key.

A \$50 deposit is required and is refunded on return of the key.

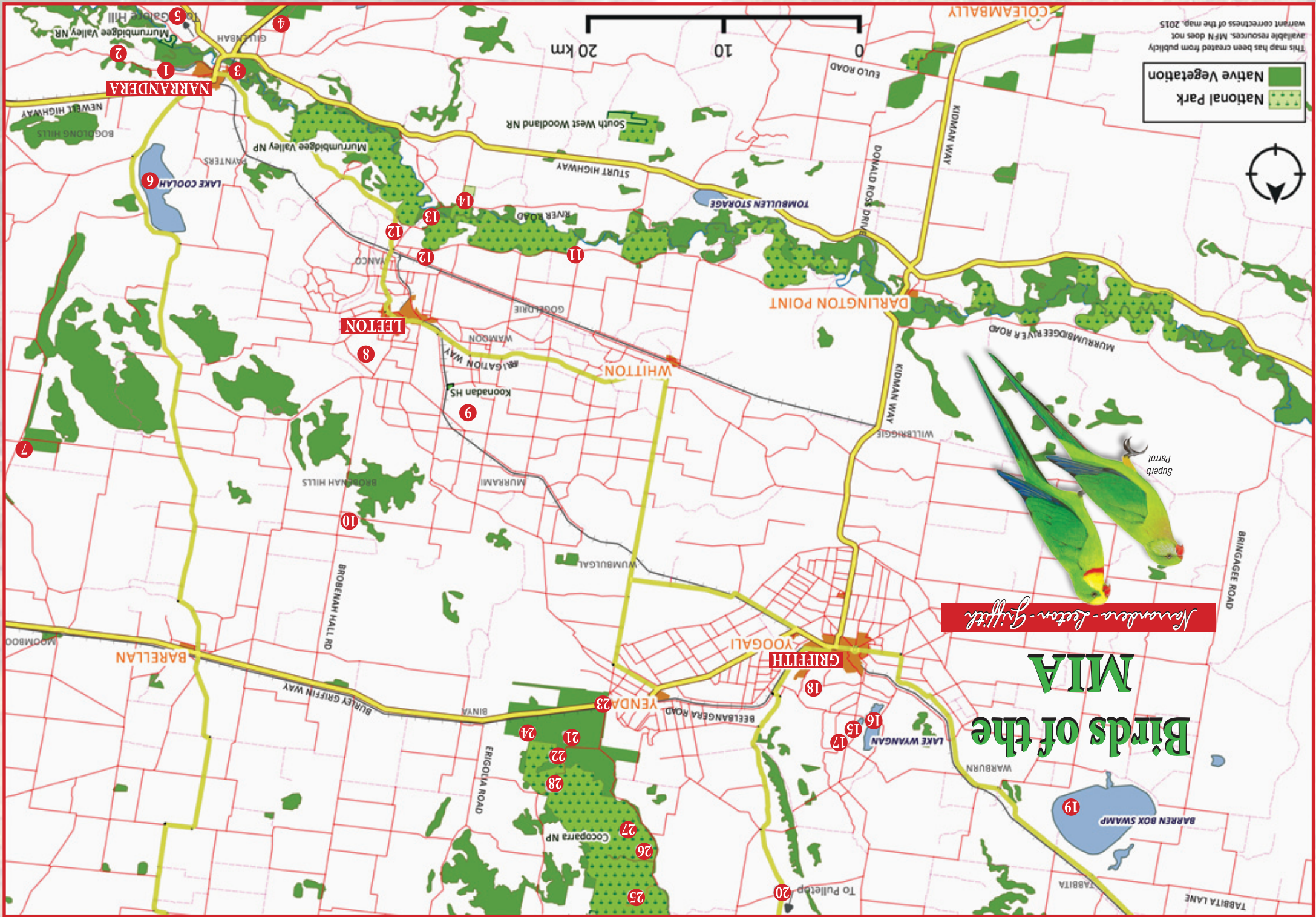
### PULLETOP NATIONAL PARK 20

A small mallee reserve 42 kms north of Griffith, off the Rankins Springs Rd, had been a good birding site in the past but has not been as productive due to fragmentation of the landscape. It is worth a visit for the mallee form of Spotted Pardalote and Yellow-plumed Honeyeater.



Mulga Parrot





# Birds of the MIA

*Narrandera - Leeton - Griffith*

## BINYA STATE FOREST AND COCOPARRA NATIONAL PARK

*Pine Box woodland with good understorey*

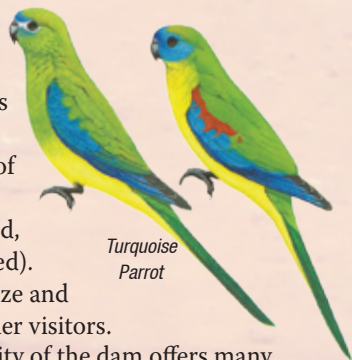
### BINYA STATE FOREST 21

The best birding exists at two main sites - Wattle Dam and the southern section along historic Whitton Stock Route Rd.

### WATTLE DAM 22

From Burley Griffin Way cross the railway and head north along the Whitton Stock Route Rd and east along Barry Scenic Drive, 6.5km on the right from the rail crossing. Wattle Dam and adjacent bushland is rich in many species particularly in the early morning and late afternoon.

The dam itself attracts many species of sought after birds such as Turquoise and Mulga Parrot, Diamond Firetail, doves (Diamond, Peaceful and Bar-shouldered) as well as species of honeyeater (Spiny-cheeked, Singing, Striped, Brown-headed, White-eared and White-plumed). Also cuckoos (Horsfield's Bronze and Black-eared) are regular summer visitors. A walk in the bush in the vicinity of the dam offers many species such as Speckled Warbler, Splendid and Variegated Fairy-Wren, Eastern Yellow Robin, Jacky Winter, White-winged Triller (summer), woodswallow (White-browed, Masked and Dusky), Emu and Bee-eater (summer). Off the road opposite Wattle Dam is another dam, Moss Dam, is also worth a look.



*Turquoise Parrot*

### WHITTON STOCK ROUTE RD 23

From Burley Griffin Way head south for 900m. This area is best for Painted Honeyeater from October until late January. A walk on either side of the road will be rewarded with sightings of many bush birds including Black Honeyeater (summer), Brown Honeyeater, Mallee Ringneck, Splendid Fairy-Wren and Mulga Parrot, Superb Parrot (summer), thornbills and doves. When the Eremophila longifolia is in flower from November there is the possibility of Pied, White-fronted and Yellow-plumed Honeyeater.



*Splendid Fairy-Wren*

### GALAH DAM 24

From Whitton Stock Route Road intersection follow the Burley Griffin Way east for 4.4km and turn left and cross the railway line into the forest. Finding the dam can be tricky but look for Trolley Track then Galah Rd. Sitting at the dam can be very rewarding even in the middle of the day and especially in hot weather when the overhanging trees fill with a variety of species. Brown-headed Honeyeaters are common, Diamond Firetails visit as do Swamp Wallaby.

*\* None of the above sites have toilet facilities but bush camping is possible.*



*Painted Honeyeater*

## COCOPARRA NATIONAL PARK

Has many good birding sites on the western side along the historic Whitton Stock Route Road, which wends north to Rankins Springs.

### WOOLSHED FLAT 25

**JACK'S CREEK 26** and **STORE CREEK 27** are three main areas with easy access.

### SPRING HILL PICNIC AREA 28

is located further along the road that runs past the Wattle Dam entrance. It is good for Speckled Warbler, Eastern Yellow Robin and thornbills.

*\* There are toilets at the 4 sites and camping is permitted at Woolshed Flat.*

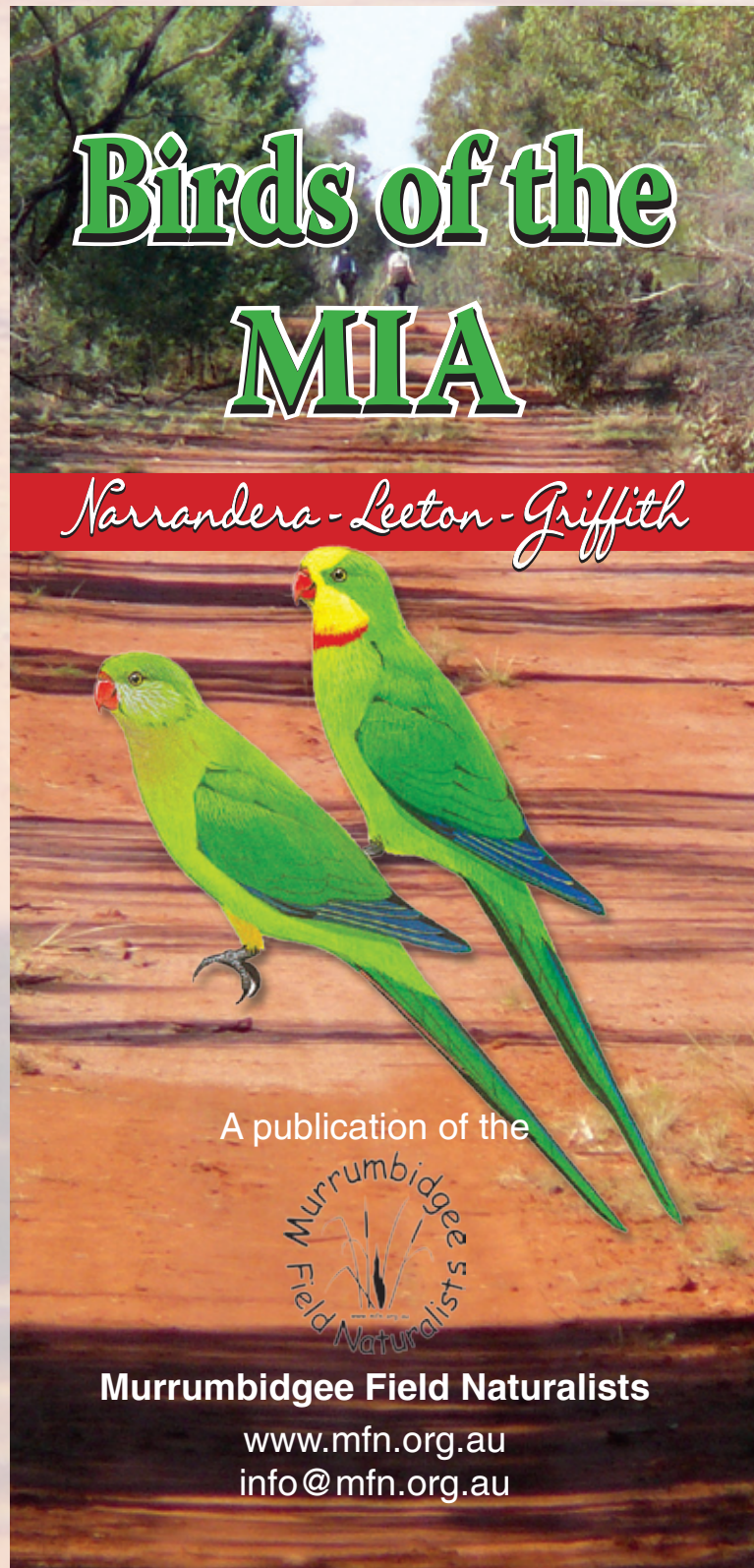


*Diamond Firetail*

## MURRUMBIDGEE VALLEY NATIONAL PARK

This mostly Red Gum forest extends from just west of Narrandera along the Murrumbidgee River and beyond Darlington Point. There are many access roads through the forest and bush camping is permitted at most sites although there are no toilets within the park. Birds found in these areas include Superb Parrots (most of the year), Yellow Rosella, White-winged Chough, Apostlebird, Currawong (winter) and robins.

*Permission for bird prints from Harper Collins*



# Birds of the MIA

*Narrandera - Leeton - Griffith*

A publication of the



**Murrumbidgee Field Naturalists**

[www.mfn.org.au](http://www.mfn.org.au)  
[info@mfn.org.au](mailto:info@mfn.org.au)