

# ***The Murrumbidgee Naturalist***



**October 2025 - Issue #340**

**Journal of the Murrumbidgee Field Naturalists Inc.**

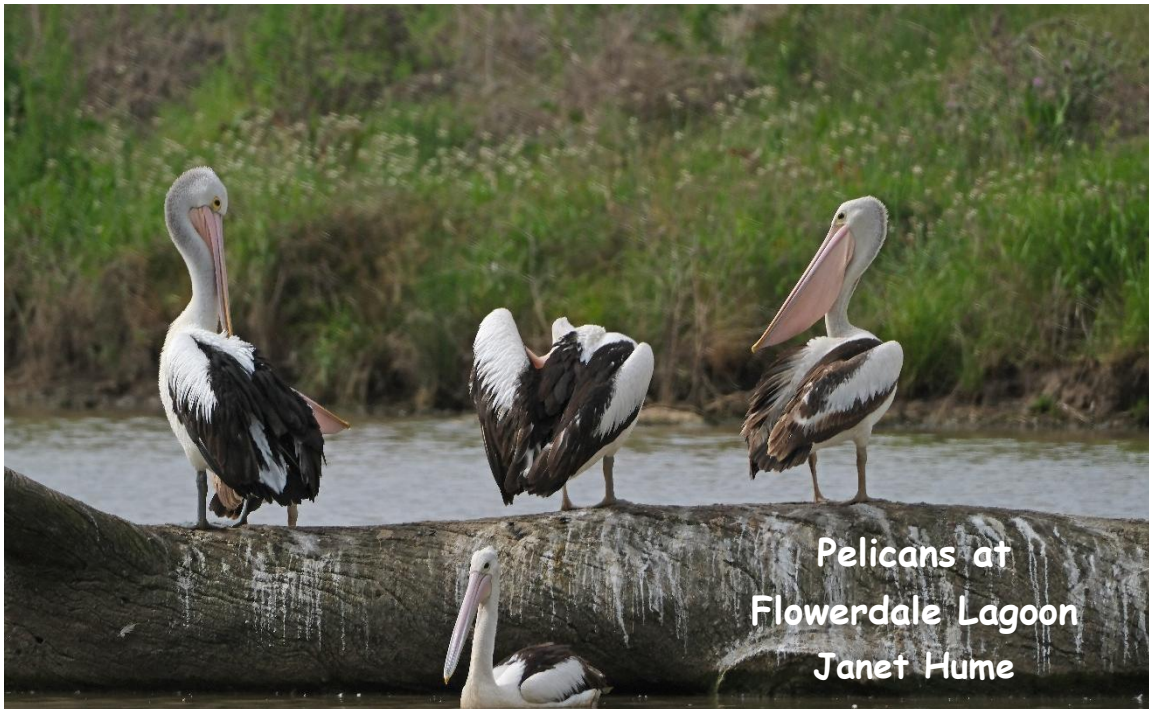
**PO Box 541, LEETON 2705 ISSN-1327-1172**

**Website: [www.mfn.org.au](http://www.mfn.org.au)**

**Email: [murrumbidgeefieldnaturalists@gmail.com](mailto:murrumbidgeefieldnaturalists@gmail.com)**

## **Objectives**

To facilitate and promote the knowledge of natural history, and to encourage the preservation and protection of the Australian natural environment, especially that of the Murrumbidgee River Valley



**Pelicans at  
Flowerdale Lagoon  
Janet Hume**

## **IN THIS ISSUE**

Office Bearers and Subscriptions .....	2
Welcome to October .....	2
Soils ain't jus' soils .....	3
Narrandera's 2025 Koala Fest and Koala Count .....	4
Watching for H5 bird flu (H5N1 Avian Influenza) .....	4
Our Walk on Mount Brogden .....	5
Hill Teatree – <i>Gaudium divaricatum</i> .....	6
Floral Observations in Narrandera's Flora and Fauna Reserve .....	7
Malleefowl Mound Monitoring 2025 .....	8
Great Aussie Bird Count .....	9
Members' Observations .....	9
Members' Sightings .....	10
Coming Events .....	11/12

## **CONTRIBUTIONS**

**For the November issue by  
Wednesday 5 November**

**To Rowena Whiting**

**Email: [ericwhiting4@bigpond.com](mailto:ericwhiting4@bigpond.com).**

**Phone: 6953 2612**

***October 20-26 is  
Bird Week***

## Murrumbidgee Field Naturalists Inc. Office Bearers and Annual Subscriptions

<b>President:</b>	Sarah Danckert	0427 276 306	<b>Editor:</b>	Rowena Whiting	0429 726 120
<b>Vice President:</b>	Margaret Strong	0434 060 973	<b>Committee:</b>	Eric Whiting	6953 2612
<b>Vice President:</b>	Nella Smith	0428 890 537		Graham Russell	0419 350 673
<b>Vice President:</b>	Virginia Tarr	0434 831 031		Janet Hume	0408 238 890
<b>Secretary:</b>	Vacant				
<b>Treasurer:</b>	Glenn Currie	0488 563 321	<b>Website Co-ordinator:</b>	Virginia Tarr	0434 831 031

**MEETINGS** are held on the second Thursday each month, except January, at the Henry Lawson Room, Leeton Library, Sycamore Street, Leeton at 7pm.

**FIELD TRIPS** NORMALLY TAKE PLACE ON THE FOLLOWING WEEKEND; (Leeton, Griffith, Narrandera areas) AND ON THE FIRST SUNDAY OF THE MONTH (Wagga Wagga area)

INTENDING NEW MEMBERS, GUESTS AND VISITORS WELCOME.

### Membership enquiries:

<b>Leeton</b>	Eric Whiting	6953 2612	<b>Griffith</b>	Virginia Tarr	0434 831 031
<b>Narrandera</b>	Nella Smith	0428 890 537	<b>Wagga Wagga</b>	Sarah Danckert	0427 276 306

**Annual Subscriptions:** Family \$45.00 Adult/Single \$35.00 Journal only/Concession \$25.00

**Bank details for direct deposit:** BSB 082 672 account no. 722043387, a/c name: Murrumbidgee Field Naturalists Inc. Include your own name and description of payment in the reference box.

Opinions expressed by authors are their own and do not necessarily represent the policies or views of the Murrumbidgee Field Naturalists Inc.

## Welcome to October

I hope you have all making the most of Spring.

This month our field trip will be to the **Cowabbie Range** located south of Ardlethan, the property is owned by the Minchin family, Geoff was our guest speaker last month. This hill property has not been grazed or suffered wildfire in living memory, there should be some orchids (and other flowers) to see. It is Glossy Black Cockatoo country.

Our Guest Speaker will be Rodney Guest whom some of our members will know from the Rankins Springs Glossy Black Cockatoo counts. He is also involved with the **NSW Malleefowl Recovery Group** and it is their Monitoring Program he will be talking to us about: what is involved in the upcoming training and subsequent monitoring. MFN has been allocated an area to survey. See coming events on page 11/12 and information on page 8.

There are a number of annual bird events this month with 20-26 October being **National Bird Week**. This is a time to celebrate and raise awareness of the importance of our local birds and what we can do to help them in our own backyards and community. The **Great Aussie Bird Count** is a good way to contribute to the national snapshot of birds. As usual the **Twitchathon** will be held on the last weekend. This is a race in which teams aim to tick off as many bird species as they can in the allotted time (3, 12, or 30 hours). So consider forming a team and be part of this fund raising event.

It is also the time for the **Great Southern Bio-blitz** with a couple of events in our area (Leeton & Wagga Wagga) so it would be good if members can support them. You can find the dates and more detail on the coming events page 11.

Your feedback is welcome - I really thought there would be some regarding Alan's sighting of the Western Grey Kangaroo but no. Don't hesitate to share any nature observations of interest or queries you may have. My thanks to all those who have contributed to this issue.

With our AGM coming up next month, all positions become vacant and need to be filled. It would be nice to fill the Secretary's position (Glenn has been undertaking this role in addition to Treasurer this year) and the current committee would welcome more members being involved particularly in planning speakers and field trips.

Enjoy this month's read, **Rowena**.

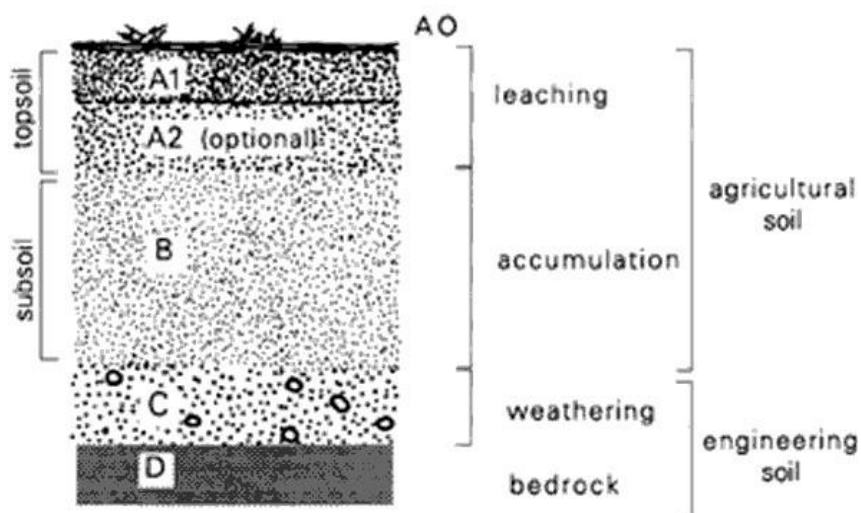
## Soils ain't jus' soils

We walk on the soil surface, we observe what life there is above it, but how many times do we consider what it is like below the surface? Yet the type and structure of the soil determines what will grow and how well. In other words it is fundamental to all of life on land.

We were fortunate to have **Geoff Minchin**, an Agricultural Advisor on soil health in Local Land Services, give us an introduction to this unseen world. Unseen until a soil pit is dug down a metre or more.

Soils are complex, but an underlying feature for growing plants is that a deficiency of one essential element cannot be compensated by increasing other elements. (Most Australian soils are generally known to be poor in potassium, with native species generally adapted to cope with that. Introduced plants including crop plants are not so adapted. Hence the wholesale use of fertilisers).

A typical soil profile shows distinct layers (horizons) that are termed A, B, C, etc. The A horizon (often called the top-soil) is where the biological activity takes place and is generally blackish. Most of the fine feeder roots are in this horizon. The B horizon (subsoil) is where clays and leached materials from the A horizon accumulate. Tap roots exploiting moisture and minerals and anchor roots need to penetrate into this horizon. The C horizon is weathered rock and is generally unimportant to plant growth.



Generic soil structure image

(Tocal College)

By using images of soil pit profiles Geoff introduced us to four examples of soil types commonly found in our area. Brown

Chromosols common to the lower slopes, e.g. around Cudgel, Have a sandy topsoil up to 40cm deep, partly derived from blown sands overlying a brown coloured alkaline clay. Yellowish patches show the effect of water logging and bleached layers near the top shows the effect of leached salt.

Further east (around Marrar for example) Red Chromosols are common. The B horizon is a sandy freely-draining loam with a reddish colour. This ideal for cereal crops. Red Chromosols can be dense at depth and any roots have to find fine cracks to penetrate downwards. These may remediated by either growing a lucerne crop that can penetrate this layer or by resorting to mechanical ripping.

In contrast Grey Vertisols are formed from heavy grey clay or uniform clays that can become denser at c40cm depth. The clays swell on wetting stopping drainage, just right for irrigated crops like rice. On drying they crack or flake (self-mulching).

Kandasols also have no or ill-defined B sub-horizons. Fruit trees or grapes have strong deep roots capable of exploiting the few fine vertical cracks that are present.

I am sure we will at least think more about what is beneath our feet, although I don't expect any of us will start digging soil pits. Geoff though did give us three links for us to find more information on our soils.

eSpade v2.2.

Soils near me app.

[www.soilscienceaustralia.org.au](http://www.soilscienceaustralia.org.au)

Thank you very much, Geoff for a very illuminating presentation.

**Eric Whiting**

## Narrandera's 2025 Koala Fest and Koala Count

Narrandera held their annual Koala Fest and Count on the 20<sup>th</sup>/21<sup>st</sup> September weekend. MFN had a display at the Saturday Fest, in conjunction with Narrandera Landcare and the Koala Regeneration Committee. It was a windy day and challenging to set up the display boards etc.

Nella's skull collection attracted a lot of interest as usual. I'll always remember the little girl who, after learning what animal a specific skull belonged to, always followed up with "And what happened to it?" She would have asked this seven times, but I never had a good answer ready. Between us adults, they all died somehow.

Sarah and Catherine kept busy during the afternoon stripping some Eucalyptus branches of their leaves till a container weighed 1kg, the amount an adult Koala can eat in a day. I was surprised at what they ended up with.



Glenn and Catherine at the MFN display Photo by Meg Hollins

Sarah had an enjoyable day stepping up and volunteering to be the leader on one of the Lion's train tours through local Koala habitat and also leading a guided walk around the Narrandera Wetlands.

Many thanks to Sarah, Catherine and Nella for representing MFN on the day.

The Koala Count was held on the Sunday. However due to recent rain, vehicle access was restricted to The Common (the survey area) so the usual transects couldn't be accessed. The survey groups mostly proceeded on foot from the entrance to The Common and went in different directions.

There were around 60 spotters, down from the usual 120+, maybe due to people being Koala 'ed out from the Fest the previous day? Still, 48 koalas were counted, up 9 from last year. 6 joeys were seen and included in the count. Recording this sort of breeding activity was the main reason for moving the Count from May to September.

All in all, this year's Koala Count is a positive sign that the Narrandera koala colony is thriving.

Glenn Currie

---

## Watching for H5 bird flu (H5N1 Avian Influenza) in Australia

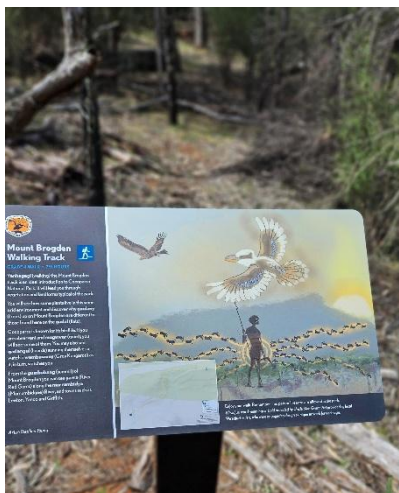
An outbreak of H5 bird flu in Australian birds could be catastrophic, as one in six Australian birds are already facing the threat of extinction. Migratory birds are arriving and may be carriers.

H5 bird flu (H5N1, a strain of highly pathogenic avian influenza) is an infectious disease that can affect wild, farmed and pet birds. H5 bird flu is a nationally notifiable disease meaning if you suspect an animal is showing signs of the disease, you must report it.

The birdlife website details the symptoms and what to do if you suspect a wild bird may be infected along with steps you can take to prevent its spread. It also gives information about what is being done to prepare for it.

[https://birdlife.org.au/avian-influenza/?utm\\_medium=email&utm\\_source=pardot&utm\\_campaign=BIBY\\_H5N125\\_webinar&utm\\_content=Text2](https://birdlife.org.au/avian-influenza/?utm_medium=email&utm_source=pardot&utm_campaign=BIBY_H5N125_webinar&utm_content=Text2)





It turned out to be a perfectly warm sunny day with seven of us gathered at the Mt. Brogden picnic area (Cocoparras National Park), ready for the 2.5 hr grade 4 hike up to the lookout. The Park had recently put in new signs to give us a better understanding of what we will see. Along the water washed gravel track, steep and rock laden in places, we saw much vegetation. A variety of woodland trees such as White Cypress Pines, Drooping She-oaks, Dwyer Mallee Eucalyptus trees, Currawang, Hakea Wattle, and much more.

The shrubs included Hill Teatrees, Fringed Heath Myrtle, Pomaderris, Grooved Dampiera, Hop Goodenia and Puntty Bush. Herbage include Tufted Bluebells, Blue Heron's-bill, Purple Burr-Daisies, Slender Violets, Small Vanilla Lilies, Purple Parsnips, abundance of Twining Fringe Lilies, Small Purslane, Urn Heath (*Melichrus urceolatus*), Austral Carrots, Wiry

Mitrewort, Flannel Cudweed, Sponge-fruit, Wattle Matrush, Hair Pod-cross, Bulbine Lilies, Leek Lilies, Tiny Stars and Clustered Everlastings.



**Grooved Dampiera**

Photos by Sally Bamblett



**Zieria aspalathoides**

The four species of orchids include Pink Fingers (*Caladenia fuscata*), Midget Greenhood (*Pterostylis mutica*) Dwarf Greenhoods (*Pterostylis nana*) and surprisingly the Trim Sun Orchids (*Thelymitra peniculata*) were in bud and 3 had a flower on each.

Margrit showed us a Tree Skink on a sunny log and Sally tried photographing a small grey Dragon

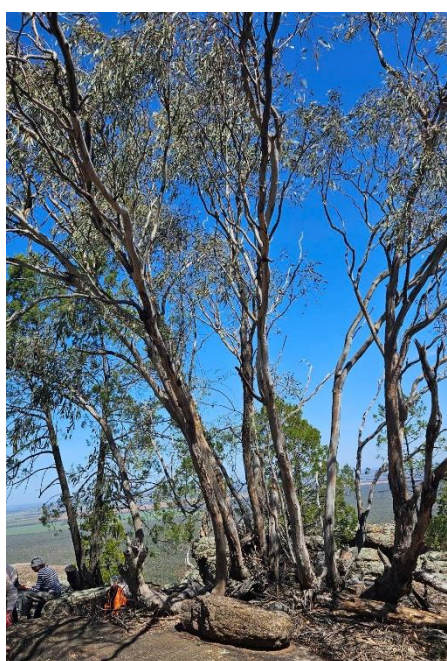
on a distant rock ledge up at the lookout while we were having lunch.

There were good views of the Hills across the valley, farmland of green and yellow patches, and distant ranges.



**Our lunch spot**

Photos by Virginia Tarr



**Dwyers Gum**



**Trim Sun Orchid**

Margaret Strong



Our downhill walk was just as interesting, watching our footing and finding further shrubs, a kangaroo scampering off in the distance and more of the same orchids. The Rufous Whistlers were singing all the way up and back.

Birdlist gathered from Glenn included:

Common Bronzewing, Shining Bronze-Cuckoo, Splendid Fairywrens, Spiny-cheeked Honeyeaters, Western Gerygone (H), Black-faced Cuckoo-shrike, Yellow Thornbills, Rufous Whistlers, Grey Fantails, and a Raven or two.

We met up with Eric and Rowena back at the carpark and thankfully no-one had any injuries. Maybe some sore leg muscles next day. Jeff treated us with very tasty juicy oranges to finish the day before moving onto the Yenda Flora & Fauna Reserve for people to see the Warrior Bush, and its importance to the Capewhite Butterflies.

### Virginia Tarr

Ref: 'Orchids of Central Western NSW' by Colin C Bower & Richard W Medd for Trim Sun Orchid.

---

## Hill Teatree – *Gaudium divaricatum*

We see this attractive shrub on hilltops in our district, including on Mt. Brogden where some were in flower on Saturday 27<sup>th</sup>. The familiar white flowers on the multi-branched shrubs were a feature of the walk.

Because of the common name, we'd assume that they belong to the *Leptospermum* genus, but they have recently been reclassified into the new *Gaudium* genus. A characteristic of *Leptospermum* is persistent fruit on the branches. The stemless seed capsules are held by those shrubs for several years, which isn't what we see on our local species.

Currently, small seed capsules with stems can be seen developing where flowers are spent on our local shrubs. These will drop off after the seeds are dispersed during late spring / early summer. Deciduous seed capsules are a feature of the *Gaudium* genus.



It seems that renaming this species helps us to understand one of its obvious and most easily observed features. The common English name is sure to remain the same, as the flowers of *Gaudium divaricatum* resemble what most Australians would recognise as Teatree.

An article from the Botanic Gardens of Sydney explaining the work involved in reclassifying the *Leptospermum* genus is available at: [www.botanicgardens.org.au](http://www.botanicgardens.org.au)

A useful reference for *Gaudium* and *Leptospermum* is <https://plantnet.rbgsyd.nsw.gov.au>

Margaret Strong



## Floral Observations in Narrandera's Flora and Fauna Reserve

Narrandera's Flora and Fauna Reserve is known to most locals as The Common. It's on the floodplain of the Murrumbidgee and I've listened to Narrandera Landcare members over the years voicing concerns about the prevalence of weeds there. And there is a lot of weeds!

Narrandera's annual Koala Count is held through The Common and I took part in September, spending as much time looking down as I did up. What I saw during the Count was very interesting.

I was in Leigh Mathieson's (MLi Local Landcare Coordinator) team for the count. Leigh is quite familiar with the reserve and like me, only noticed Leek Lillies (*Bulbine semibarbata*) for the first time down there just two years ago. Now you can see broad swathes of yellow through the Common from the flowers of these multiplying plants. It's a very nice sight.

Then when we went off track to get a closer look at a Koala someone had spotted, and I came across a single Chocolate/Vanilla Lily (*Arthropodium sp.*). I wanted to point it out to Leigh, but he had already found his own. When we started looking closer, there were quite a few of them.

Walking back to the track, I came across an Early Nancy (*Wurmbea dioica*). Just a solitary one but there would have to be more. The leaves of some Garland Lily's, *Calostemma purpureum*, were evident and should flower come summer.

We came across some Bulbines with much bigger flowers and I assume these were *Bulbine bulbosa* – hopefully they'll multiply like their smaller cousins have. I also saw Bluebells, *Wahlenbergia sp.* here and there.

Leigh pointed out some Broughton Peas, *Swainsona procumbens*, as we walked, and I noticed Tufted Burr-daisy, *Calotis scapigera*, were just starting to flower. In previous years these have formed eye-catching large mats of white flowers. Poison Pratia, *Pratia concolor*, was another species I noticed growing.



Narrandera Flora & Fauna Reserve –  
inset Bulbine Lilies  
Below Paterson's Curse rosette

There were lots of Paterson's Curse rosettes but everyone I looked at had been attacked by one of the bugs released to help control it. Cape Weed is everywhere and the pink flowers of a *Fumaria sp.* still dominate the landscape there in September.

The Fauna part of the reserve's name was never in doubt with the koalas, kangaroos, wallabies, echidnas and multitudes of birds always observed, but I'm looking forward to informing our Landcare members, "don't despair!", our Common is looking like it will be worthy of the Flora part of its name.

Glenn Currie





## Malleefowl Mound Monitoring 2025

Malleefowl in NSW are scraping together leaf litter and soil to build and maintain their mounds for incubation of the eggs to be laid soon – it's all starting to happen again and the NSWMRG are requesting help to monitor the known mounds. The activity that they record from mound activity is used as the best indicator of the species survival – the greater number of active mounds, the more Malleefowl are out in the bush.



You will need to be a financial member to be covered for insurance and to participate in Malleefowl monitoring. Become a member here - <https://www.nswmalleefowlrecoverygroup.com.au/become-a-member> or if you prefer, complete the attached Membership form and pay by direct debit.

### Dates for your calendar:

- **West Wyalong - Sat 18<sup>th</sup> Oct (arrive early Sat or the Friday night before) and Sunday 19<sup>th</sup> Oct** – training, monitoring and the NSW Recovery Group AGM will all be held in and around West Wyalong
- Saturday will be training for those who have not done training before or need a refresher – 9:30 am – 1pm. Sat afternoon will be training in the field at Tallimba
- If you are trained already, they can set you up with locations to go out and monitor mounds with the phones, GPS and equipment required. If you are not able to attend this weekend they can arrange with you to monitor mounds at a later date.
- **Yathong - Thu 13<sup>th</sup> Nov (arrive in the afternoon or Friday 14<sup>th</sup>) to Mon 17<sup>th</sup> Nov 2025 (leave)** - Monitoring Malleefowl at Yathong Nature Reserve (north of Hillston and NW of Mt Hope). The coordinator for this is Tarnya Cox.
- **Alleena area – 1-2<sup>nd</sup> November**, MFN has been allocated an area to complete mound surveys. If you would like to participate, members are required to be members of NSWMRG for insurance purposes. Attending the West Wyalong training sessions is strongly encouraged. Members who haven't attended the training can still participate but will have to partner with one who has attended. The MFN survey location is Alleena (between Mirrool and West Wyalong). The survey dates are Saturday & Sunday 1 & 2 November, camping nearby or on location Saturday night. Contact Sarah if you can come.

If you are interested in participating in this monitoring, please email Tarnya directly at [tarnya.cox@dpird.nsw.gov.au](mailto:tarnya.cox@dpird.nsw.gov.au). Accommodation has been booked but spots are limited, so contact Tarnya asap to reserve your accommodation

You will be required to make your own way to Yathong (directions will be provided). AWD vehicles are required at a minimum. Accommodation - you will need your own bedding (king single) and bring your own food and water. A camp kitchen is available. If it's raining, we cannot go - the park roads are closed once there is 10mm.

Glenn Currie

Malleefowl – monitoring in October 2020 by Phillip Williams  
Taleeban Malleefowl mound (unused) MFN outing August 2018 by Rowena Whiting





## Great Aussie Bird Count - Australia's biggest bird-spotting event



### How to Count

**Step One** Spend 20 minutes in your backyard, local park, school yard or other favourite outdoor space

**Step Two** Use the Aussie Backyard Bird Count app, or the form on our website to record the types of birds you see and how many

**Step Three** Not sure about a bird? Don't worry, there is a field guide with a 'bird finder' built into the app and on the website to help you identify them

**Step Four** Submit as many counts as you want. You can participate by yourself or in a group.



From **20–26 October**, tens of thousands of Australians will spend just 20 minutes counting the birds around them – in backyards, balconies, schoolyards and local parks. Last year, over **57,000 people counted more than 4.1 million birds** – and we'd love you to join the flock to help make this year's Count our biggest yet.

You don't need to be a bird expert to join the Count – it's fun, simple and for everyone! You don't need to be a bird expert – our free **Aussie Bird Count app** will guide you step-by-step. All it takes is a bit of curiosity and 20 minutes. You'll discover your local birds, connect with nature and feel great knowing your sightings are contributing to BirdLife Australia's work protecting native birds and their habitats.

Birds are everywhere. In our backyards, balconies, local parks and schoolyards, and they have amazing stories to tell about the health of our environment. Right now, one in six Australian birds faces the threat of extinction, making it more important than ever to pay attention.

The Aussie Bird Count is a fun, easy way for all of us to take a national snapshot of the birds we see and start noticing the nature around us. With just 20 minutes, you can help build a picture of how our feathered friends are faring and contribute to something that really counts.

**JOIN THE AUSSIE BIRD COUNT**

Birdlife Australia - <https://aussiebirdcount.org.au/>

See coming events page for an event in Wagga Wagga

## Member observations

Janet Hume – photos taken in early September.

(Left) Dusky Woodswallow Pomingalarna Reserve

(Below) Weebill with nesting material at Rocky Hill



# M E M B E R S ' S I G H T I N G S

These sightings are from members' observations. Please check with the relevant person before quoting any record.

## Significant sightings

<b>Glossy Black Cockatoo</b> [2 up to 16] 7 days a week	"Yarrabimbi", Colinroobie Rd, Leeton	09/25	Ana & Andrew
<b>Pink Cockatoo</b> [20+] Most days	"Yarrabimbi", Colinroobie Rd, Leeton	09/25	Ana & Andrew
<b>Golden Whistler</b> [1]	"Yarrabimbi", Colinroobie Rd, Leeton	01/09/25	Ana & Andrew
<b>Blue-faced Honeyeater</b> [2]	"Yarrabimbi", Colinroobie Rd, Leeton	01/09/25	Ana & Andrew
<b>Pink Cockatoo</b> [2]	"Mountain Dam", Colinroobie Rd, Leeton	09/09/25	Dionee Russell
<b>Indian Myna</b> [2] First sighting at this location	Koonadan Road (Leeton)	09/09/25	Penny Williams
<b>Superb Parrot</b> [6]	San Isidore, Wagga Wagga	09/09/25	Sarah Danckert
<b>Blue-faced Honeyeater</b>	Narrandera Wetlands	11/09/25	Susan Whitehead
<b>Superb Parrot</b> [16]	Rawlings Park	14/09/25	MFN Birdwalk
<b>Varied Sitella</b> [2]	Mundarlo Road cutting, Wagga Wagga	25/09/25	Sarah Danckert
<b>Superb Parrot</b> [1]	Marrambidya. Wagga Wagga	28/09/25	Janet Hume

## Sightings of interest

<b>Weebill</b> [2] Nest building, seen entering with nesting material	Rocky Hill, Koorinal	07/09/25	MFN Birdwalk
<b>Yellow Rosella</b> [2]	Narrandera Wetlands	11/09/25	Susan Whitehead
<b>Zebra Finch</b> [8] While Zebra Finches are numerous, they are not often sighted near Wagga	CSU Dairy, Wagga Wagga	25/09/25	CSU event
<b>Caper White Butterfly</b> (First for this season)	Whitton	05/09/25	Margaret Strong
<b>Small Grass Yellow Butterfly</b> (First reported sighting this season)	Mt. Brogden, Cocoparras Nat Park	27/09/25	Margaret Strong
<b>Lesser Wanderer Butterfly</b> (In its range, but first sighting in our region)	Mt. Brogden, Cocoparras Nat Park	27/09/25	Margaret Strong

**Please note** that in last month's Newsletter I incorrectly reported Yellow Migrant for Small Grass Yellow. I'm now certain of the differences between the species. Margaret Strong.

Compiled by Janet Hume/Rowena Whiting

## From Virginia Tarr

### Mt. Brogden. 4/9/25

Rufous Whistlers (10+) mainly H.  
Grey Shrike-thrush, H. (1)  
Eastern Yellow Robin.(1)

Grey Fantails (2)  
Shining Bronze-Cuckoo. H, (1)

Gerygone H, (1)  
Grey Butcherbird. (1)

### Scenic Hill 6/9/25

Red-capped Robin (1)  
Yellow-rumped Thornbills (4)

Rufous Whistlers(8+)  
Black-faced Cuckoo-shrike (1)

Grey Fantails (4)  
Grey Shrike-thrush (1)

### Sth Lake Wyangan 20/9/25

Sacred Kingfisher (1)  
Yellow-rumped Thornbills (3)

Nankeen Kestral (1)  
Black-barred Lapwings (2)

White-plumed Honeyeater (4)



# \*\*\*\* COMING EVENTS \*\*\*\*

Please note all outings are subject to weather conditions.

Please register with the nominated person so they can be contacted if there is a change in arrangements.  
Registering also means that the leader is better able to plan activities.

- 9 October Thursday**      **Monthly Meeting** in the Yellow Room at the **Leeton Library**, Sycamore St., Leeton commencing at 7pm.  
**Speaker: Rodney Guest** will speak about the **Malleefowl Monitoring Program** which he is involved with including the incubation of eggs. He will speak about the upcoming training and search identity etc.  
Bring along Show and Tell  
**Email:** [murrumbidgeefieldnaturalists@gmail.com](mailto:murrumbidgeefieldnaturalists@gmail.com)
- 11 October Saturday**      **Wallerobie Range**  
Geoff Minchin has invited us to his family's property. MFN visited this hill property which has not been grazed or suffered wildfire in living memory, in November 2001 and was impressed with the flora and fauna.  
**Meet: 9am, junction Ardlethan-Coolamon Rd and Wallerobie Rd**  
**Bring: morning tea and lunch**  
**Register: Eric Whiting** email: [ericwhiting4@bigpond.com](mailto:ericwhiting4@bigpond.com) Phone: 0429 726 120.
- 18-19 October**      **Malleefowl Mound Monitoring Training**  
Location: in and around West Wyalong  
For more information see Page 8.
- 24-27 October**      **Great Southern Bio-blitz in the area**  
<https://mli.org.au/great-southern-bioblitz-2025-murrumbidgee/>
- 24 October Friday**      **Great Southern Bio-blitz at Fivebough Wetlands**  
Learn about water bugs, frogs, birds, First Nations culture, Environmental water and all things great at Fivebough.  
Time: 5:30 onwards. Sausage sizzle provided.  
Register: [https://mli.org.au/mc-events/leeton-great-southern-bioblitz-2025/?mc\\_id=215](https://mli.org.au/mc-events/leeton-great-southern-bioblitz-2025/?mc_id=215)
- 25-26 October**  
**Saturday/Sunday**      **TWITCHATHON – NSW & ACT**  
This is a team-based birdwatching and fundraising event with a choice of 3 timed 'races' – 30-hour, 8-hour and 3-hour. Funds raised will be allotted to protecting the Far Eastern Curlew at Port Hacking. The Club will donate \$500, which will be split between our competing teams.  
For information about this event see <https://www.twitchathon.com.au/>  
If you are interested in participating contact Glenn Currie -  
Email: [murrumbidgeefieldnaturalists@gmail.com](mailto:murrumbidgeefieldnaturalists@gmail.com)
- 1-2 November**      **Malleefowl Mound Monitoring at Aleena (between Mirrool and West Wyalong)**  
MFN has been allocated this area to complete mound surveys  
For more information see Page 8.  
**Contact** Sarah Danckert 0427 276 306 [murrumbidgeefieldnaturalists@gmail.com](mailto:murrumbidgeefieldnaturalists@gmail.com)
- 5 November Wednesday**      **Copy for the November newsletter is due. Please send to Rowena.**  
Email: [ericwhiting4@bigpond.com](mailto:ericwhiting4@bigpond.com) Phone: 0429 726 120.



\*\*\*\* COMING EVENTS continued \*\*\*\*

- 6 November Thursday**      **Committee Meeting held at 7pm by Zoom**  
All members are welcome to attend and submit agenda items  
Email: [murrumbidgeefieldnaturalists@gmail.com](mailto:murrumbidgeefieldnaturalists@gmail.com)
- 11 November Tuesday**      **Nature Conservation Council Picnic for Nature**  
**Wagga Wagga Botanical Gardens - Australian Flora Section BBQ area**  
**Time: 5pm**  
**Contact** Sarah Danckert 0427 276 306 [murrumbidgeefieldnaturalists@gmail.com](mailto:murrumbidgeefieldnaturalists@gmail.com)
- 13 November Thursday**      **Annual General Meeting and Monthly Meeting** in the Yellow Room at the  
**Leeton Library**, Sycamore St., Leeton commencing at 7pm.  
Speaker/topic: to be decided  
Bring along Show and Tell  
**Email:** [murrumbidgeefieldnaturalists@gmail.com](mailto:murrumbidgeefieldnaturalists@gmail.com)
- 13-17 November**              **Malleefowl Mound Monitoring at Yathong**  
For more information see Page 8.  
**Contact** Sarah Danckert 0427 276 306 [murrumbidgeefieldnaturalists@gmail.com](mailto:murrumbidgeefieldnaturalists@gmail.com)
- 13 December Saturday**      **End of year outing**  
**Narrandera Food Garden** has been suggested – please inform the committee  
of any alternatives. [murrumbidgeefieldnaturalists@gmail.com](mailto:murrumbidgeefieldnaturalists@gmail.com)

## Other Events

**Volunteer Opportunity at Tarcutta Hills Reserve with PhD candidate Georgea Kamara to assist Ecological data collection for 2 days during 20-31 October.** This is part of her doctoral research into the restoration and recovery of native grassy woodlands. Email: [murrumbidgeefieldnaturalists@gmail.com](mailto:murrumbidgeefieldnaturalists@gmail.com) for full details and Bush Heritage volunteer registration.

### **20-26 October Great Aussie Bird Count - Australia's biggest bird-spotting event**

Sustainable Wagga Wagga will be hosting Family Friendly events at

**Marrambidya Wetland Wagga Wagga, Sunday 19 October 10am - 12 midday.**

Also at 4 other locations - Please support Sustainable Wagga Wagga in hosting a beginner birding and Family Friendly orientation to the Aussie Bird Count App and how to get you started recording our local birds.

**Great Inland Glossy Count** will be run on three weekends in October 2025. Dates for the surveys;

11 October - Pilliga Forests and surrounds (registrations close on 8 October)

18 October - Goonoo National Park and surrounds (registrations close on 15 October)

25 October - Goobang National Park and surrounds (registrations close on 22 October).

<https://www.nationalparks.nsw.gov.au/things-to-do/events/the-great-inland-glossy-count>

### **24-27 October GET READY TO BLITZ THE MURRUMBIDGEE!** 🌿

Join the Murrumbidgee project on iNaturalist and help us document the flora and fauna in the region between 24-27 October, as part of the Great Southern Bioblitz!

[The Flow-MER Program](#) will have a team at **Fivebough Wetlands** in Leeton on the 24th of October, from 5.30pm onwards. Learn about water bugs, frogs, birds and all things great at Fivebough. Food will be provided.

[Wagga Wagga Urban Landcare](#) will also be hosting a bioblitz activity,

Join the project on iNaturalist:

[Great Southern Bioblitz 2025: Murrumbidgee · iNaturalist](#)